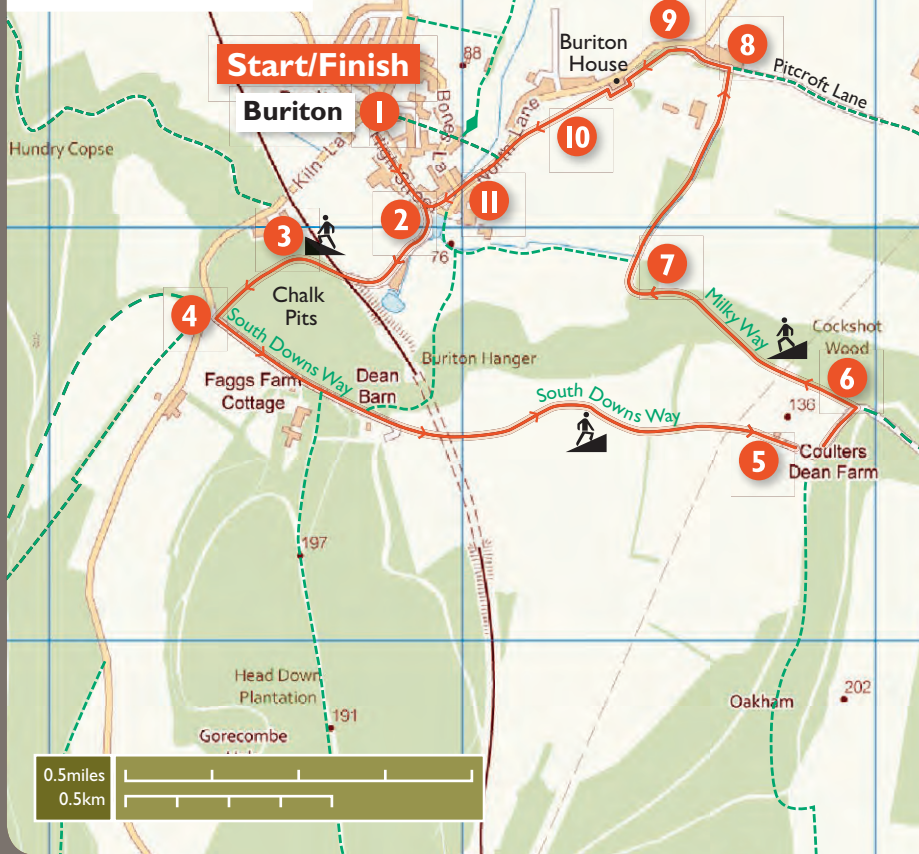
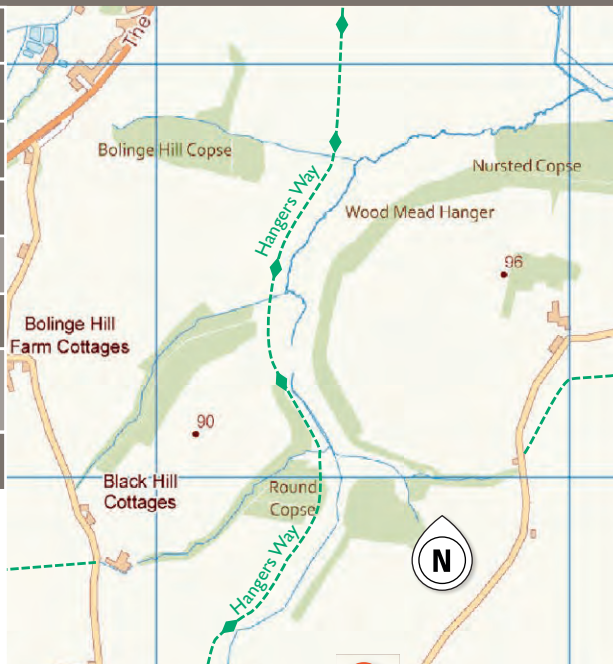


Buriton
Distance: 3 miles/5 km
Time: 1.5–2 hours
Bus: 94
Stagecoach
Access:
Some stiles and steep hills
Key:



Route Instructions

- 1 From the bus stop turn right down the **High Street** passing the village school.
- 2 Turn right at the pond onto **South Lane** and follow the bridleway under the railway bridge and up the hill.
- 3 Halfway up the hill you can take a track off to the left, through the gate, to visit **Buriton Chalk Pits**. Retrace your footsteps back to the main path to continue the walk.
- 4 At the crossroads turn left and follow the lane onto the **South Downs Way (SDW)**.
- 5 Follow the SDW past **Coulters Dean Farm** and onto the road where it bears round to the left.
- 6 At the right hand corner take the byway off to the left known as the **Milky Way**.
- 7 Follow this track down the hill and around to the right heading north.
- 8 When the track meets **Pitcroft Lane** turn left.
- 9 Just after the gates to **Buriton House** take the footpath to your left up some small steps.
- 10 Follow the path past the big house and through a field until you join the road.
- 11 Follow the road back round to the pond and church, then retrace your footsteps back to the bus stop.

Walks near Buriton and East Meon

Discover another way to visit the South Downs National Park. Go to www.traveline.co.uk or call 0871 200 22 33 to find public transport information. For train timetables, visit www.nationalrail.co.uk or call 08457 484950.

South Downs National Park

The South Downs National Park is Britain's newest National Park, rich in landscape, culture and wildlife. Discover ancient woodland and enjoy spectacular views as you explore the open downs and heathlands. Within these landscapes lie bustling market towns and peaceful rural villages, historic houses and the remains of ancient settlements.

Contact us

South Downs National Park Authority

Tel: 0300 303 1053

Web: www.southdowns.gov.uk

Twitter: @SDNPA Facebook: SDNPA

Please follow the Countryside Code:

Leave gates as you find them and keep dogs under close control or on a lead.

Where in the South Downs National Park:



Details correct at time of going to print. Please be aware that routes are shared with other users (vehicles, pedestrians, dogs, horses etc) and users of the SDNPA Walk and Ride Leaflet Series do so at their own risk. We do not accept any responsibility for loss, damage or injury, however caused, arising directly or indirectly from use of this leaflet. Contains Ordnance Survey data © Crown copyright and database right 2013.

Walks near Buriton and East Meon



Leave your car at home, take the bus

East Meon

Distance: 8 miles / 13 km

Time: 3.5–4.5 hours

Bus: 67

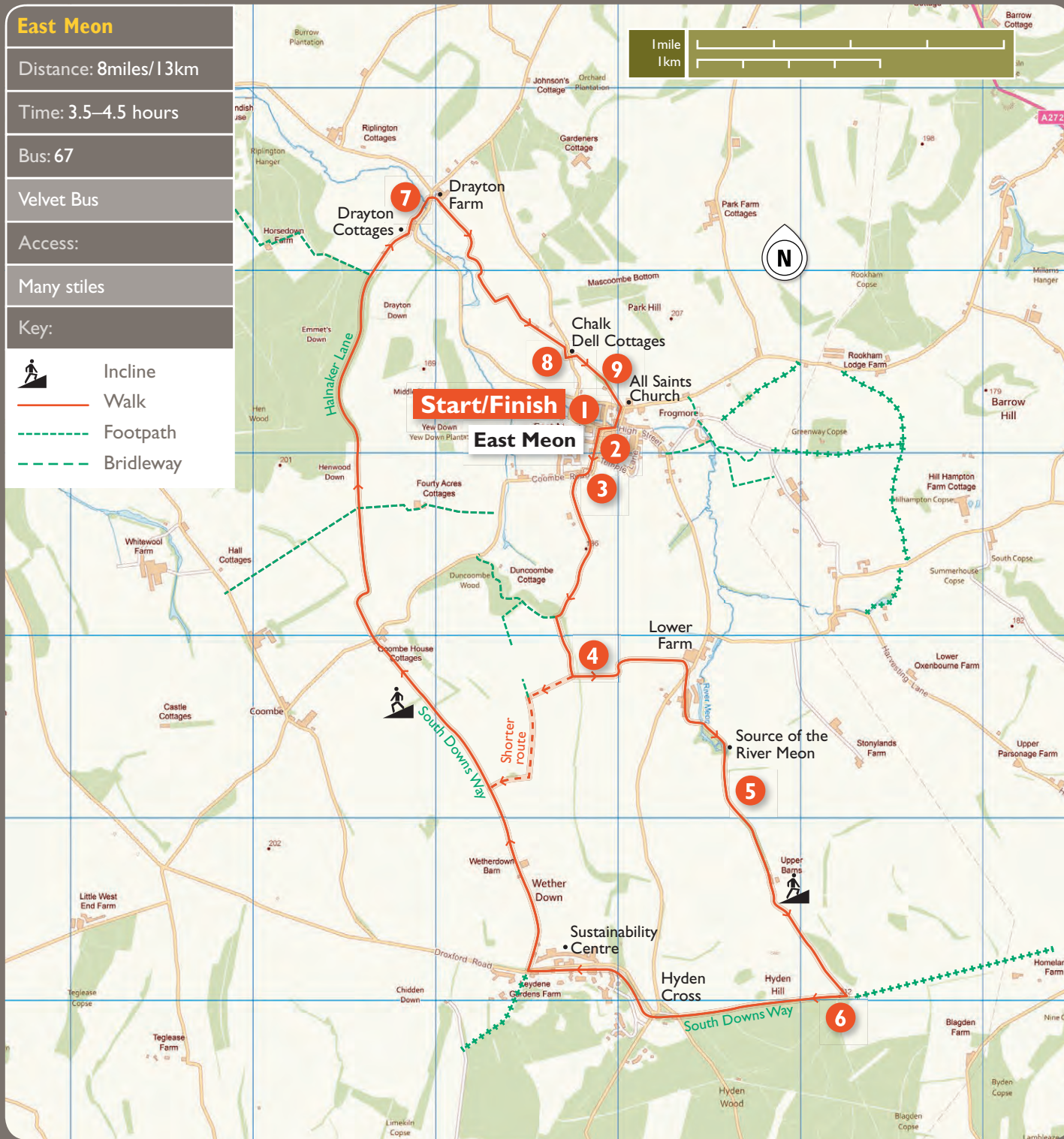
Velvet Bus

Access:

Many stiles

Key:

-  Incline
-  Walk
-  Footpath
-  Bridleway



Route Instructions

- 1 Starting at the bus stop outside the church, walk south down **Church Street** turning right onto the **High Street**.
- 2 Bear round to the left continuing along **Chapel Street** past the school.
- 3 After the corner take the footpath on your left heading south.
- 4 Follow the path east to **Lower Farm**. (If you want to take the shorter route take the second footpath on your right and join this route again at route point 6).
- 5 Cross over the road at **Lower Farm** and continue along the footpath until you meet the **South Downs Way**.
- 6 Turn right onto the SDW and follow the trail past **Hyden Cross** and the **Sustainability Centre** until it takes a sharp turn off to the left before **Hen Wood**. At this point continue ahead on the byway known as **Halnaker Lane** and onto the road past **Drayton Cottages**.
- 7 Carefully cross the road and follow it over the river **Meon**, then take the footpath to the right by the hedge, just before **Drayton Farm**.
- 8 Follow the path to **Chalk Dell Cottages** then take the footpath opposite the cottages on the other side of the lane.
- 9 Keep right until you walk down next to the church and return to the bus stop in **East Meon**.



© Photo Brian Briggs

East Meon walk

The All Saints Church in East Meon dates from Norman times (between 1080 and 1150). However it is believed to have replaced a much older Saxon church. The magnificent spire seen today was added in 1230.

At South Farm you can see one of the sources of the river Meon, known as the 'Swift one'. The clear water is typical of a chalk stream where the water has been filtered through the chalk for thousands of years.

Once part of an inland naval training base, the award winning Sustainability Centre aims to educate, enable and inspire people from all walks of life to make positive changes to the way they live and work. Everyone is welcome at the centre so to find out more please visit www.sustainability-centre.org

Opening hours:

Centre Reception: 10am–4pm Mon–Fri

Centre Grounds: All day, every day

The Beech Cafe: 10am–4pm Wed–Sun

Accommodation Reception: 8.30am–7pm every day

Buriton walk (overleaf)

The chalk of the South Downs acts like a giant sponge storing water. This underground aquifer feeds water from springs into streams and rivers, and provides drinking water to 1.97 million people in and around the South Downs. Buriton is a 'springline village' and owes its existence to this water supply.

In Buriton Chalk Pits, steep sided 'quarry bowls' have developed. The site has regenerated over the years forming a rich habitat with a high level of chalk-based species. It is now designated a Site of Importance for Nature Conservation (SINC) and a Local Nature Reserve. For more information please visit www.buriton.info/buriton_chalk_pits