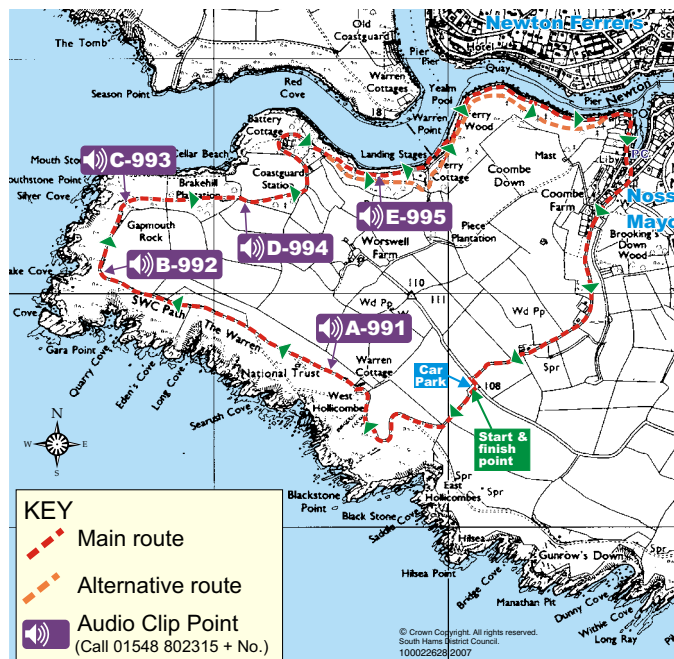


## Noss Mayo and Revelstoke Drive

The many faces of maritime South Devon in one walk; wild open sea and rugged coast, sheltered estuary, wooded riverbanks, and the waterfront village of Noss Mayo with its chocolate box charm.

<b>Start:</b>	Warren Car Park
<b>Distance:</b>	4.5 miles
<b>Circular Walk:</b>	Yes
<b>Grade:</b>	Easy
<b>Terrain:</b>	Wide and even coast path; surfaced roads; tracks; optional woodland footpaths.
<b>Obstacles &amp; Steep Gradients:</b>	1 stile (can be bypassed).
<b>Public transport:</b>	Bus service 94 from Plymouth and Yealmpton to Noss Mayo. Join walk route from Noss Mayo. For information on public transport in South Hams please call Traveline on 0871 200 22 33 <a href="http://www.traveline.org.uk">www.traveline.org.uk</a> .
<b>Refreshment stops:</b>	In Noss Mayo: Ship Inn 01752 872387; Swan Inn 01752 872392.
<b>Toilets:</b>	Public toilets at the creek inlet near Ship Inn, Noss Mayo.
<b>Parking:</b>	Warren National Trust Car Park: by donation. (Note: car park often full in holiday season and at weekends. Very little parking in Noss Mayo village. Please do not park on road).
<b>Accommodation:</b>	Please contact Modbury Tourist Information Centre on 01548 830159 <a href="http://www.modburydevoninfo.cco.uk">www.modburydevoninfo.cco.uk</a>
<b>Other facilities:</b>	Public payphone in Noss Mayo.
<b>OS map:</b>	Explorer 0L20
<b>Grid Ref:</b>	SX541466

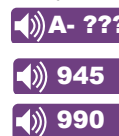


### 'Hidden estuaries' Audio Clips

To discover more about the hidden and past world within this estuary, just listen to the audio clip at the position shown on the map. You can download the clips from [www.SouthDevonAONB.org.uk](http://www.SouthDevonAONB.org.uk) onto an MP3 player or simply call the local no. **01548 802315** and then the number shown by each position.



Intro to South Devon AONB estuaries  
Intro to this estuary



### Directions

1. Leave the car park through the wooden gate at the far end and join footpath towards the sea. Pass through the five-barred gate and turn right onto the coast path along Revelstoke Carriage Drive.
2. Pass in front of Warren Cottage and continue, following the coast path around the headland and into the Yealm Estuary.
3. 250m beyond Battery Cottage, either bear left along a footpath through the woods (grade moderate), or continue along the Drive. Both routes join again after a further 700m.
4. 20m after the routes meet there is another choice: bear right onto the footpath through Ferry Wood alongside the road (grade moderate), or continue to follow the road itself. The two routes join after another 800m.
5. Follow the road through the village. At a sharp left hand uphill bend turn right, by a cottage called Yonda Coombe.
6. Go past car park and tennis courts and follow the lane, which leads onto a track up the hill.
7. At the road, turn left immediately right into car park.



## Heritage

Noss Mayo finds its first historical mention in the 13th Century. The area was then owned by one Matthieu Fitz Herbert, and the village was known as La Nasse de Matthieu. From that mouthful the modern-day name Noss Mayo evolved.



Much of the walk follows the route of a carriage driveway created on the orders of local landowner Lord Revelstoke in the 1880s. The Drive forms a nine-mile tour built so that the Lord could entertain guests with a scenic carriage ride and impress them with his property and wealth. A short distance in, the route passes by Warren Cottage, which was at one time the lunch-stop for the Lord and his visitors.

## Landscape

The area around Warren Cottage was once used for farming rabbits for their meat and skins. The remains of walls built to keep the animals in can still be seen.



Off the coast can be seen the Great Mew Stone. 'Mew' was an old name for a gull, and the rocky island is a haven for many seabirds.

Much of the land passed through on the walk is owned by the National Trust, and is managed for wildlife conservation and to enhance the richness of landscape. The Trust asks that all dogs be kept under close control. For further information on the National Trust visit [www.nationaltrust.org.uk](http://www.nationaltrust.org.uk).

## Wildlife

Dolphins and porpoises can sometimes be seen from the coast path section of this walk, along with grey seals. The seals may be seen 'hauled out' on the rocks below, or in the water with just their heads visible above the waves. Around half of the world's population of grey seals live around British coasts.



The Shore Dock, an extremely rare species of a familiar type of plant, is found along the coast here. It has greyish green leaves and tiny red flowers. Other rarities growing here include Pennyroyal, a

quirky plant with a peppermint smell and clusters of lilac flowers like small pin cushions, and Rock Sea-lavender. The British Isles are home to eight species of Rock Sea-lavender found nowhere else in the world. This hardy little plant has a ray of oval leaves at the base, with lavender florets in delicate masses on the stems above.



Cormorants nest over on the Great Mew Stone. You may see their large black shapes perched on rocks, their wings hung half-open, or else flying low over the water with necks outstretched. Their smaller cousins the Shags are also

found around the coast here. Both species catch fish in long underwater drives.

In the woods along the river estuary younger trees are thinned out to allow more light in. This encourages wildflowers such as Primroses and Violets. It also provides habitat for butterflies such as the brown and cream Speckled Wood, and the orange tip which, as its name suggests, has orange tips to its largely white wings.

