



Wolds Way
NATIONAL TRAIL
Hidden Gems Guide

79 miles of **peaceful walking**
along Yorkshire's best kept secret

The **Wolds Way**

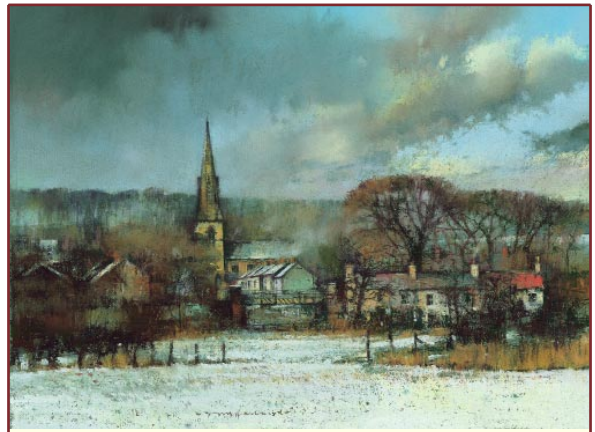
is a National Trail that glides across the gentle chalk hills, spacious fields and hidden valleys of the Yorkshire Wolds for 79 miles/127 kilometres.

Whether you are a long distance walker or a day visitor to the Yorkshire Wolds there is a wealth of hidden gems to discover alongside the line of the Wolds Way National Trail.

Take some time out to visit the craftsmen, artists, nurseries, providers of locally produced food and drink, a medieval village and even a Buddhist Centre that lie alongside the route.

Please note that all details were correct at the time of going to press –September 2002.

North Ferriby



Winter afternoon – North Ferriby

Tom Harland

Artist



Tom Harland N.D.D Studio and Gallery
15 Low Street
North Ferriby
East Yorkshire
HU14 3DD

Tel 01482 632028

Tom Harland paintings are collected around the world. He was born at North Ferriby and has remained true to his roots, exhibiting a remarkable affinity to the northern landscape. People identify with the warmth and realism of Tom Harlands paintings that give them a unique view that is forever England.

Gallery Opening Times:

Saturdays 10.00am – 1.00pm

Private viewing can also be arranged, please telephone for an appointment.

Grid Reference 987 260 Distance from Wolds Way ¼ mile

Hot Tip: From North Ferriby take a walk on the Wolds Way along the fascinating Humber estuary to the Humber Bridge and back.



The Outdoor Shop

Troyrest Ltd

2

82 York Road
Market Weighton
York
YO43 3EF

Tel/Fax 01430 873823

e-mail troyrest@btinternet.com

Troyrest – The Outdoor Shop is a handy outlet for budding Wolds Way walkers situated conveniently alongside the National Trail. A wide range of outdoor gear is available for all your walking and camping needs.

Opening times:

Open daily except on Mondays

Grid Reference 875 419 Distance from Wolds Way On route

Hot Tip: Market Weighton is famous for its association with William Bradley – England's tallest ever man. Each year the town holds its Giant Bradley day as a celebration. You can find out more details on www.wicstun.com



John Sugden

Cabinet Maker

3

J. M. Sugden
Arras Farm
Market Weighton
York
YO43 4RN

Tel 01430 871068/01430 874097

John Sugden designs high class hand made furniture to order from his workshop right alongside the Wolds Way. He also produces kitchens and specialises in hardwoods. Deliveries can be arranged.

Opening times:

Open most weekdays except when delivering

Grid Reference 926 417 Distance from Wolds Way On route

Hot Tip: Arras is just 7 miles from the historic market town of Beverley. It's well worth a visit to wander amongst its historic architecture, well preserved from medieval to Georgian times.

Goodmanham



Goodmanham Arms

Pub and Microbrewery

4

Goodmanham,
East Yorks

Tel 01430 873849

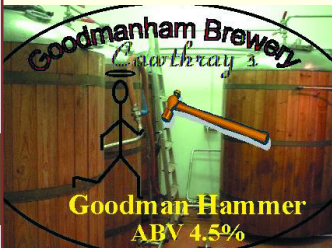
The Goodmanham Arms has its own microbrewery specialising in its main brew of Wolds Delight, which is a light coloured hoppy session beer. If you've a taste for it can you resist their other ales, Goodman Hammer, Randy Monk and Monks Revenge?

Opening times:

Monday to Thursday 8pm to 11pm , Friday 7pm to 11pm

Saturday 12pm to 5pm and 7pm to 10.30pm

Sunday 12pm to 5pm and 8pm to 10.30pm



6

Grid Reference **889 431** Distance from Wolds Way **On route**

Goodmanham



Wold Woodworking

Quality Garden Furniture

5

Roger Oxtoby
Wold Woodworking
The Barn
Manor Farm
Goodmanham
Yorks
E.Yorks
YO43 3JA

Tel/Fax 01430 872828

e-mail woldwood@lycos.co.uk

www.woldwood.co.uk

Wold Woodworking produce hand built garden furniture in beautiful hardwoods and pine. They also stock a full range of Alexander Rose garden furniture. Free delivery within 25 mile radius of Market Weighton.

Showroom opening times:



Tuesday to Friday and Sunday from 9.00am to 5.00pm

Grid Reference **891 432** Distance from Wolds Way **On route**

Hot Tip: There's a great Wolds Way circular walk of 7 miles/ 11 km between Market Weighton, Goodmanham and Londesborough. Details are available in the "Six of the Best" Packs available from Tourist Information Centres.

7



 Route of Wolds Way National Trail
 Area of Yorkshire Wolds

Wolds Way Hidden Gems

- 1** Tom Harland
Artist
- 2** The Outdoor Shop
Troyrest Ltd
- 3** John Sugden
Cabinet Maker
- 4** Goodmanham Arms
Pub and Microbrewery
- 5** Wold Woodworking
Quality Garden Furniture
- 6** Nunburnholme Plants
Nursery
- 7** Madhyamaka Buddhist Centre
Meditation Retreat Centre
- 8** Robert E. Fuller Gallery
Wildlife Artist and Sculptor
- 9** Wharram Percy
Deserted Medieval Village.
- 10** Sally Middlewood Farm Bakery

Nunburnholme



Nunburnholme Plants

Nursery

6

The Old Rectory (next to the Church)
Nunburnholme
E. Yorks
Tel 01759 302295/ 306586

Nunburnholme Plants is a small nursery growing interesting border perennials in a beautiful garden setting at The Old Rectory.

Opening Times:

April to October –
Thursday to Sunday afternoons and Bank Holidays

Grid Reference 847 477 Distance from Wolds Way On route

Hot Tip: From Nunburnholme its worth a visit to nearby Londesborough to walk on the Wolds Way through the beautiful grounds of Londesborough Park.

10

Kilnwick Percy

(near Pocklington)



Madhyamaka Buddhist Centre

– Meditation Retreat Centre

7

Kilnwick Percy Hall
Pocklington
York
YO42 1UF

Tel 01759 304832 (2-5pm weekdays)
e-mail info@madhyamaka.org
www.madhyamaka.org

The Madhyamaka Buddhist centre at Kilnwick Percy Hall offers meditation retreats, designed to give you the time and space to relax in a peaceful and beautiful setting, away from the rush of daily life. Give the centre a call for details of the activities available.

Opening Times:

Activities take place at the centre daily, but for details the office is open between 2 and 5pm on weekdays.

Grid Reference 826 498 Distance from Wolds Way ¾ mile

Hot Tip: The perfect stress beating combination is a meditation session combined with a long walk on the Wolds Way, by far the most peaceful of all the National Trails.

11



'Zebras Limited edition'

Robert E. Fuller Gallery

Wildlife Artist and Sculptor

8

Robert E Fuller
Fotherdale Farm
Thixendale
Malton
YO17 9LS

Tel 01759 368355

mail@robertefuller.com

www.robertefuller.com

Robert E. Fuller grew up on a farm at nearby Givendale. From an early age his outstanding artistic skills were identified and he now receives critical acclaim nationally. The superb beamed gallery at Fotherdale Farm was completed in 2001. It houses a stunning collection of Roberts work, with framed and mounted prints available for purchase or mail order can be arranged. A major exhibition is held every May and November.

Opening times:

Ring ahead to arrange a suitable time for viewing.

Grid Reference 836 600 Distance from Wolds Way ¼ mile

12

Hot Tip: From the gallery it's just a short drop, partly using the Wolds Way down to Thixendale, one of the Wolds finest villages, with an excellent country pub, The Cross Keys, providing good food and drink.



Wharram Percy

Deserted Medieval Village

9

Wharram Percy
Near Wharram le Street
Malton

Tel contact English Heritage

Yorkshire Regional Office 01904 601901

www.english-heritage.org.uk

Wharram Percy is considered to be the most famous and most investigated of the deserted medieval villages in England. It became deserted from the 16th Century, mainly as a result of a change in agriculture from corn growing to sheep rearing. The site is managed by English Heritage and is free to visit.

Opening times:

Open daily

Grid Reference 859 644 Distance from Wolds Way On route

Hot Tip: Using the Wolds Way Explorer bus service (details on **www.moorsbus.net** and **01845 597426**) you can drop off and enjoy both the walk down the ¼ mile path to Wharram Percy and later get a lift over to enjoy the splendour of Sledmere House.

13



Sally Middlewood Farm Bakery

10

Glebe Farm
Potter Brompton
Ganton
Scarborough
YO12 4PE

Tel 01944 710256

The Sally Middlewood Farm Bakery, situated just a few hundred metres off the Wolds Way at Potter Brompton, provides a wide range of locally produced farm products.

Opening times:

Monday to Saturday 9.00am to 5.30pm
Sunday 11.00am to 4.00pm

Grid Reference 978 773 Distance from Wolds Way ¼ mile

Hot tip: From Potter Brompton it's worth a quick visit to nearby Ganton, with its magnificent 14th century spire of St Nicholas church.

More Information

There is plenty more information available if you are interested in walking on the Wolds Way. Here are three easy ways to find out more;

1. View the website through
www.nationaltrail.co.uk
2. Telephone or write and ask for an Order Form to order from the following:

Wolds Way Accommodation & Information Guide.
This Guide includes details of shops, pubs and public transport opportunities.

Wolds Way (National Trail Route Guide)

Six of the Best
- Circular Walks along the Wolds Way

Ordnance Survey Explorer Maps
covering the Wolds Way



3. Contact the Wolds Way National Trail Officer to discuss your individual needs.

Tel 01439 770657 or from abroad 00 44 1439 770657
Fax 01439 770691 or from abroad 00 44 1439 770691
e-mail - **m.hodgson@northyorkmoors-npa.gov.uk**

Address Wolds Way Project
c/o North York Moors National Park
The Old Vicarage
Bondgate
Helmsley
York
YO62 5BP

National Trails

in England and Wales



National Trail	—
National Trail approved but not yet open	- - -
National Park and equivalent area	■

 The
Countryside
Agency

 EAST RIDING
OF YORKSHIRE COUNCIL

Wolds Way Project
c/o North York Moors National Park Authority

The Old Vicarage, Bondgate
Helmsley, York YO62 5BP

Tel + 44 (0) 1439 770657

Fax + 44 (0) 1439 770691

www.nationaltrail.co.uk

Designed and produced by Room for Design
Cover photograph by Mike Kipling