



Distance: **9.5km / 5.9 miles**
 Time: **2hr 21 mins**
 Type: **Walk the Norfolk Coast Path in 7 stages, part 1 / Accessible by public transport**



© Natural England - Photographer Andy Tryner 03 - 7824

Experience the hive of activity at Hunstanton, the beautiful views at Holme, followed by the solitude and refreshment of a lonely sea bank. Plenty of opportunities for distractions along the way.

1 START TF672408
 The Norfolk Coast Path begins by the bowling green in Hunstanton. This is a very busy area in Summer. Follow the black and white National Trail acorns from here.

Hunstanton was a Victorian resort popularised by the introduction of a rail line from King's Lynn in 1862. Sadly this no longer exists, however the Coasthopper bus service runs the same route.

Hunstanton possibly takes its name from 'Honeystone' which is the name traditionally given to the local carstone which can be seen throughout the area and most notably in the red of the cliffs.

2 Walk past the Light house at Old Hunstanton. The Lighthouse was operational until 1922 and is now a holiday

let. There has been one here since 1666. Look out for the ruins of St Edmund's Chapel dating back to 1272, close by.

3 At the RNLI lifeboat station the new route goes straight ahead, initially following behind the dunes and alongside Hunstanton golf course. Just before the final beach hut, waymark signs will direct you to go up onto the dunes from where there are fantastic views of the expanse of Holme beach and Hunstanton cliffs.

4 At Holme you meet the end of the Peddars Way. It is possible that a Roman ferry went across the wash to Lincolnshire from this point. As you follow the boardwalk through the Holme Dunes reserve the beach to your left is where the 4000 year old timber circle was discovered. It is now in King's Lynn museum.

Terrain: Sandy and boardwalk then the top of a sea defence which can be muddy following wet weather

Maps:

Ordnance Survey
 Explorer 250
 Landranger 132

Public Toilets:

Hunstanton

- *Bowling Green, Cliff Parade – Disabled
- *Bus Station, Westgate – Disabled
- *Central Promenade, Seagate - Disabled
- *Cliff Top, Lighthouse Close - Disabled
- *Esplanade, Esplanade Gardens – Disabled

Old Hunstanton

- *Old Hunstanton beach – No disabled

Holme

- *Beach Road - Disabled

Thornham

There are no public toilets.

Refreshments:

Hunstanton-

Various pubs, café's, fish and chips shops.

Old Hunstanton -

Various pubs, restaurants and a village shop

Holme - (01485)

The White Horse pub (t: 525512) serves food.

Thornham -

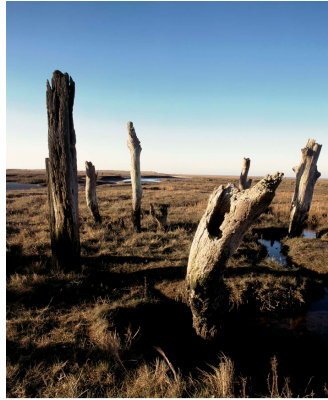
The Lifeboat Inn, The Orange Tree, both serve food. Village shop—1/2 day Thurs/Sun.

1. Hunstanton to Thornham

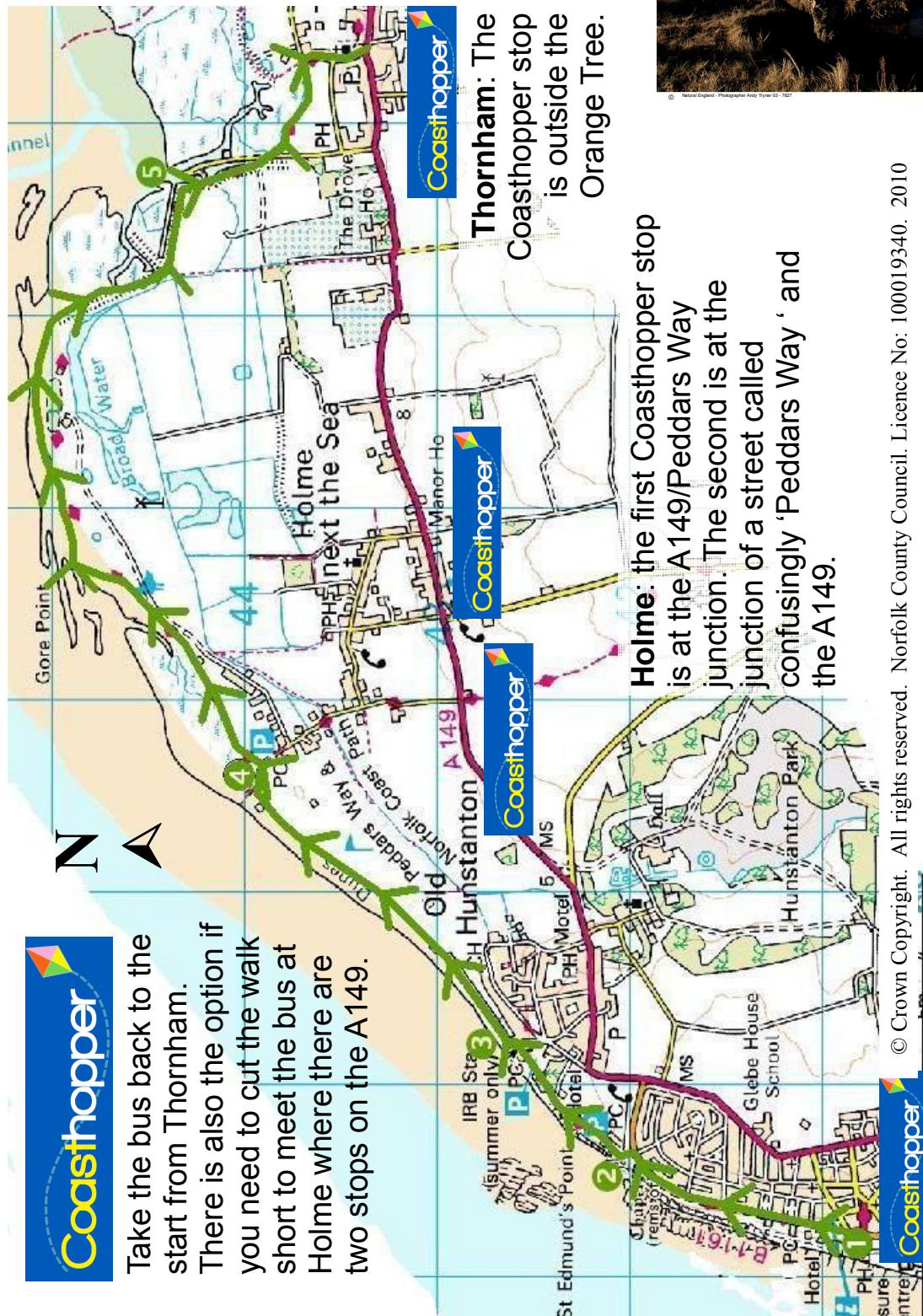


Please follow the waymarking carefully to avoid nesting birds in the dunes on this National Nature Reserve managed by the Norfolk Wildlife Trust. There were once plans to build a Butlins holiday camp here!

sluice but keep to the sea defence bank until the National Trail leaves the bank to cross the harbour road to run between reed beds and grazing marsh.



5 At Thornham harbour do not follow the path over the



Thornham: The Coasthopper stop is outside the Orange Tree.

Holme: the first Coasthopper stop is at the A149/Peddars Way junction. The second is at the junction of a street called confusingly 'Peddars Way' and the A149.



Take the bus back to the start from Thornham. There is also the option if you need to cut the walk short to meet the bus at Holme where there are two stops on the A149.

© Crown Copyright. All rights reserved. Norfolk County Council. Licence No: 100019340. 2010

Getting there:

By Bus - Coasthopper: King's Lynn to Hunstanton to Cromer along the coast. (Summer: 1/2 hourly, rest of year: hourly, Sunday variations)
From Norwich: Norfolk Green's x29 service to Fakenham then onto Wells.

By Rail - The Coasthopper service is accessible from King's Lynn which has good rail networks via Ely.

Disabled Parking:

Hunstanton - Various pay & display sites

Old Hunstanton - The Lighthouse: the car park here is used as an informal park and ride for the Coasthopper bus service

Holme - Seasonal pay & display site off of beach, few spaces next to public conveniences also on Beach Road.

Additional Info:

Note to wheelchair users regarding the Coasthopper bus:
Norfolk Green can't assure that all buses are fully wheelchair accessible during busy periods. If you need to make sure that your bus will be, then call them on tel.:01553 776980 24 hours before you travel.

Contact us and let us know how you've got



ON: www.nationaltrail.co.uk

Produced by National Trail office Feb10